

West of England Billiards & Snooker Foundation

Coaching Structure & Assessment



Document information

Author: Steve Canniford
Last Saved By: Steve Canniford
Date Last Saved: 12 July 2008
Date Printed: 12 July 2008
Revision Number: 335

Revision Date	Change / Update
01/08/2005	Badge Change
30/06/2006	Extracted from main Policy & Structure document
05/01/2007	Minor gramatical errors corrected

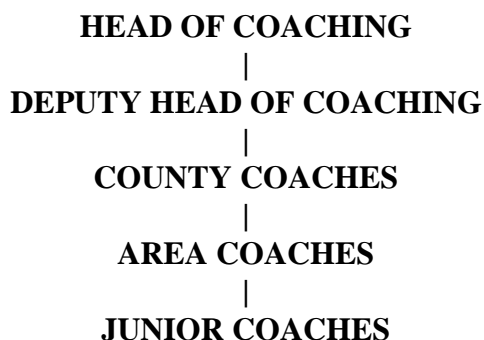
Billiards & Snooker Coaching Structure	5
Introduction	5
The WEBSF Coaching Team Structure	5
Head of Coaching	5
Deputy Head of Coaching.....	5
County Coaches	5
Area Coaches	6
Junior Coaches	6
Coaching Assistant.....	6
Coaching ‘Committee’	7
Coaching Material.....	7
Group Coaching.....	7
Individual Coaching.....	7
Coaching Fees.....	7
Solo Lessons	7
Group Lessons	7
The Role of the Coach	8
What is required to become a Billiards and/or Snooker Coach?.....	8
Coach Application and Assessment	9
Training / Mentoring.....	9
Coaching Certification and Assessment Scheme	9
Coaching Assessments	9
Introduction	9
English Billiards	9
Snooker.....	10
Levels of Competency	10
Attempts & Re-takes.....	10

Billiards & Snooker Coaching Structure

Introduction

The WEBSF is committed to providing Billiards & Snooker players throughout the West of England and Nationally with the opportunity of improving their knowledge and skill in respect of Billiards & Snooker. To this end a Coaching team has been formed.

The WEBSF Coaching Team Structure



Head of Coaching

The Head of Coaching will shoulder the majority of responsibility for development of Billiards & Snooker within the West of England.

Responsibilities include:-

- obtaining a personal Criminal Records Bureau Disclosure and comply with the WEBSF Child Protection Policy requirements.
- examining potential Coaches.
- training and advising of Coaches.
- assessing pupils.
- liaising with Coaches and the County Committees.
- promoting Billiards and Snooker Coaching throughout the West of England.
- keeping records of persons coached.
- uphold the good reputation of the WEBSF.
- ensure the safety and well being of pupils with respect to under 18's working within the guidelines laid down in the WEBSF Child Protection Policy.

Deputy Head of Coaching

The Deputy Head of Coaching will carry out the duties and responsibilities of the Head of Coaching in his/her absence.

County Coaches

The County Coach is expected to be pro-active in developing Billiards & Snooker within their respective County and providing liaison between the WEBSF and their respective County on all matters relating to Billiards & Snooker coaching.

The WEBSF to invite each County Association to select one WEBSF Coach from those nominated by the WEBSF.

Responsibilities include:-

- obtaining a personal Criminal Records Bureau Disclosure and comply with the WEBSF Child Protection Policy requirements.
- examining potential Coaches.
- training and advising of Coaches.
- assessing pupils.
- liaising with Coaches and the County Committee.
- promoting Billiards and Snooker Coaching throughout the County.
- keeping records of persons coached.
- uphold the good reputation of the WEBSF

Area Coaches

Area Coaches will have passed a Coaching Assessment taken by the Head Coach or their respective County Coach. They require a good knowledge of playing Snooker and/or Billiards and know the Rules of the Game. They should also be able to give advice on cue selection and tipping cues.

Responsibilities include:-

- obtaining a personal Criminal Records Bureau Disclosure and comply with the WEBSF Child Protection Policy requirements.
- assessing pupils.
- providing coaching and advice on Billiards and/or Snooker in their area.
- promoting Billiards and/or Snooker Coaching within their area.
- keeping records of persons coached.
- uphold the good reputation of the WEBSF

Junior Coaches

Junior Coaches must be recommended and mentored by a more senior WEBSF Coach until they have developed their coaching ability and knowledge sufficient for assessment for an Area Coach. They require a basic knowledge of playing Snooker and/or Billiards and know the Rules of the Game.

Responsibilities include:-

- if over 16 must obtain a personal Criminal Records Bureau Disclosure and comply with the WEBSF Child Protection Policy requirements.
- provide assistance to a more senior coach during coaching sessions involving juniors in their club.
- promoting Billiards and/or Snooker Coaching within their club.
- uphold the good reputation of the WEBSF.

Coaching Assistant

Coaching Assistants must be recommended and mentored by an existing WEBSF Coach until they have developed their coaching ability and knowledge, sufficient for assessment for an Area Coach. They require a basic knowledge of playing Snooker and/or Billiards and know the Rules of the Game(s).

Responsibilities include:-

- if over 16 must obtain a personal Criminal Records Bureau Disclosure and comply with the WEBSF Child Protection Policy requirements.

- provide assistance to a more senior coach during coaching sessions involving juniors in their club.
- assist in the promotion of Billiards and/or Snooker Coaching within their club.
- uphold the good reputation of the WEBSF.

Coaching ‘Committee’

All matters involving coaching will be discussed openly between all coaches. The Head coach to arrange a coaching workshop for coaches at least once a year and/or when required.

Coaching Material

Coaches will be provided with their own copy of the WEBSF approved Coaching Manuals and associated coaching template which they are encouraged to use. They will also receive a copy of the WEBSF Child Protection Policy document, which must read, understood and adhered to.

Group Coaching

Snooker – A course of instruction has been designed to meet the needs of players with varying levels of knowledge, skill and ability. Players, who are new to the game; want a better understanding of the game; or wish to re-visit their technique with the aim of improving their standard of play, would benefit from attending this course. Most aspects of snooker are covered and the degree of difficulty is tailored to suit that of the individual or group.

A full course of instruction will comprise 6 sessions each session lasting 1 hour.

Group courses will normally comprise 4 players. However, other formats can be accommodated.

Billiards – A course of instruction has been designed to meet the needs of players who are new to the game or wish to improve their current standard and awareness of billiards shot making and strategy. Most aspects of billiards are covered considering both ‘all round/red ball’ and ‘top of the table’ play.

A full course of instruction will comprise 6 sessions each session lasting 1 hour.

Group courses will normally comprise 4 players. However, other formats can be accommodated.

Individual Coaching

Those players who have completed the group course; prefer one-to-one coaching; have reached a reasonably high standard or require coaching on a specific element of their ‘game’ can be accommodated here.

Each course will be designed to suit the individual using some of the content in the stated courses and expanding as necessary.

Coaching Fees

Solo Lessons

The fee will be at the discretion of the Coach in line with WEBSF guidelines. If a pupil books a package of lessons, a discount could be negotiated. Fees to be paid in advance. Fees are reviewed annually.

Group Lessons

Two or three pupils might group together to cut costs, however one to one coaching can be more beneficial. On occasion coaching will be provided on a more general basis whereby workshops at selected venues will be organised at little or no cost to the recipients.

Note: All Coaches will be self-financed, the recommended charges are only laid down as guidelines. Coaches have the freedom to make their own charge or not, as they see fit for lessons, travelling expenses, table hire etc..

The Role of the Coach

A Coach is in a very privileged position. A pupil will tend to hang on his every word and follow every instruction to the letter. It is important that the Coach does not abuse this privilege in any way, or he will quickly lose the pupil's confidence. Whilst the Coach must gain the respect of the pupil, he should not try to achieve it by imposing himself by what is termed "over coaching". Every care must be taken to follow the guidelines in the WEBSF Coaching Template and Child Protection Policy documents. Especially with children and young adults. A pupil will often put a great deal of trust in the Coach.

A good Coach will take time to talk with his pupil and put him at ease. During early discussion the Coach will gain as much relevant background information from his pupil as possible, so that when he starts the practical side of the lesson, the Coach is in a much better position to assess the needs of his pupil.

Before any tuition takes place with under 18's, it will be policy for the Coach to speak to a parent and set ground rules i.e. Frequency of Coaching, length of Lessons, Hopes and Aspirations, pupils being picked up after lessons.

During this initial discussion you should always make notes for future reference. Listed below are examples of some questions you may need to ask: -

- How old is he?
- How long has he been playing?
- What standard does he play to?
- What standard does he hope to achieve?
- Does he compete and at what level?
- Has the Pupil had Coaching previously?
- Has he booked the lesson for a specific reason?
- Is he the type of person who is receptive to instruction? (some just like to talk about their problems)
- Does he have someone who can act as a mentor?

Each Coach is expected to keep basic records of each person they coach. The minimum details required are: Name, Age, Dates coached, Venue, Sessions (as defined in the WEBSF Coaching Template).

All Coaches must seek training in Child Protection issues and accreditation with national bodies.

The WEBSF Coaching Template and Manual will act as a guide to compliment the Coaches own knowledge and experiences

Effective Coaching is a vital ingredient in the development of individual and team performance in sport. Whatever the level of ability, from beginner through to international competitor, sound leadership and guidance are essential for successful and enjoyable participation and performance.

What is required to become a Billiards and/or Snooker Coach?

- If you feel you can fulfil the role of a coach, shoulder the responsibilities, have the desire to pass on your knowledge and experiences and you have, or have the potential to acquire the following skills:-
 - A sound knowledge of the game.
 - The ability to instil the right attitudes in players.
 - Effective planning and organisational skills.
 - Ability to detect problem areas and correct these quickly and effectively.

- Flexibility with regard to resources available to you.
- To act as a role model for the players under you.
- Belief in your own ability in order to motivate players to improve performance.
- Ability to communicate with players as individuals.
- Be prepared to keep up to date with current coaching methods.
- Have ongoing evaluation of performance and be able to analyse individual weaknesses and remedy them.

Coach Application and Assessment

Your next step is to contact your County Billiards & Snooker Association or recognised sponsoring body. They will send you a Prospective Coaches Pack. This will contain information explaining in more detail what is required and help prepare you for the assessment. If you decide not to progress all documents contained in the pack must be returned to the County Association or recognised sponsoring body. If you wish to proceed the County Association or recognised sponsoring body will put your name forward to the WEBSF and arrange the examination/assessment date and venue.

All prospective WEBSF Coaches are required to complete a self declaration form and agree to abide by the requirements of the WEBSF Child Protection Policy. You will also be required to obtain a Disclosure from the Criminal Records Bureaux. This will be arranged by the WEBSF Child Protection Officer. If the results of the Disclosure provides information causing concern the WEBSF Child Protection Officer and Management Team will act accordingly.

Training / Mentoring

If you are new to coaching and require training and/or assistance the WEBSF/County Association will arranged for an existing WEBSF coach to mentor you until such times as you are able to coach on your own. Once you have been awarded WEBSF Coaching status you will be offered an illustrated copy of the WEBSF approved Billiards & Snooker Coaching Manual. (For Coach application check list see appendix 4).

Coaching Certification and Assessment Scheme

In order to reward on-going improvement the WEBSF operates a BRONZE, SILVER & GOLD Award Scheme. This scheme is open to all WEBSF Badge holders.

All badge holders receive a WEBSF certificate indicating the level of achievement gained through successfully completing assessments.

Coaching Assessments

Introduction

There are three grades of assessment for Billiards and three grades of assessment at Snooker:-

English Billiards

BRONZE

Having undergone the full course of instruction and attained the BRONZE grade the student will have demonstrated the ability to play simple winning and losing hazards, simple cannons, show reasonable touch, and have a basic knowledge of the history, rules and equipment used to play English Billiards.

SILVER

Having successfully attained the SILVER grade the student will have demonstrated the ability to play a variation of 'all round billiards' shots so to compile modest breaks, show a good sense of touch, and good judgement of angles. They will also have a reasonable knowledge of the history, rules and equipment used to play English Billiards.

GOLD

Having successfully attained the GOLD grade the student will have demonstrated the ability to control the balls sufficiently so as to compile high breaks through the all round and top of the table method of scoring. Also to demonstrate an excellent sense of touch and have a very good knowledge of the history, rules and equipment used to play Snooker.

Snooker

BRONZE

Having undergone the full course of instruction and attained the BRONZE grade the student will have demonstrated the ability to pot simple balls, show reasonable touch, escape from simple snookers and have a basic knowledge of the history, rules and equipment used to play Billiards or Snooker.

SILVER

Having successfully attained the SILVER grade the student will have demonstrated the ability to consistently pot balls so as to compile modest breaks, show a good sense of touch, escape from difficult snookers and have a reasonable knowledge of the history, rules and equipment used to play Snooker.

GOLD

Having successfully attained the GOLD grade the student will have demonstrated the ability to consistently pot balls so as to compile match winning high breaks, show an excellent sense of touch, escape from very difficult snookers and have a very good knowledge of the history, rules and equipment used to play Snooker.

Levels of Competency

Within each grade there are six levels of competency to attain. Each level of competency includes three practical exercises to test the players' cueing skills (Accuracy of Striking, Touch and Cue Ball Control, Judgement of Angles & Trick Shots). Also each level of competency includes three questions to test their knowledge of Billiards & Snooker (history, equipment, rules, history & etiquette).

Attempts & Re-takes

Up to three attempts at each practical exercise will be permitted. All questions must be answered correctly at the first attempt. The Student will be allowed to make brief reference to the rule book and the Billiards and Snooker Bygones book to assist in answering questions on the rules and history of the game. A player is required to have completed each competency in order before attempting the next. At least one month must lapse between taking each competency and one week before any retake.

Players will normally start the assessment process by attempting the BRONZE grade. However, established players of known ability can start at SILVER but must have completed SILVER before attempting GOLD.

Before attempting any of the grades it is advisable to have completed a full WEBSF course of lessons on the Basic Principles of Billiards and Snooker and/or the Basic Principles of English Billiards.